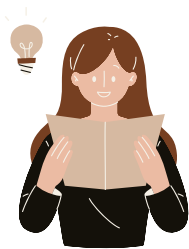


RECOMMENDATIONS FOR A STRONG AISG PHD FELLOWSHIP APPLICATION



Assess your interest in AI Research

- Do you have a strong interest in Fundamental AI research?
- Do you have Fundamental AI research experiences?
- Are you considering to pursue a full-time PhD in Singapore?
- Are you looking for a full scholarship support?

These should translate into your research personal statement. Its important to articulate your interest!

P1.

Identify a Supervisor which

- Aligns with your research interests
- Publishes in AI conferences
- Agrees to supervise your research
- Provides a recommendation letter for your application
- Nominates you for AISG PhD Fellowship through the institution



Having a suitable supervisor in AI is important towards your AI PhD research journey.

P2.

Prepare AISG PhD Fellowship Application Materials

Prepare these materials for submission to the AISG portal:



- Research Personal Statement
- Resume
- Academic Transcripts (latest)
- Previous Research Experiences
- Recommendation Letters
- Research Awards / Publications (if any)

AISG PHD FELLOWSHIP APPLICATION PROCESS

PREREQUISITES

APPLY

REVIEW

RESULTS

- Satisfy the Prerequisites (P1) & Apply for an AI-PhD in NUS/NTU/SMU/SUTD.
- Express interest in the AISG PhD Fellowship during university PhD interview/ through your supervisor
- Ensure University Faculty administrator creates an AISG applicant account

- Submit the application materials (P2) on AISG portal



AISG PhD Fellowship

- University endorses the nomination
- AISG will assess the application based on
 - Academic merits and research experiences
 - Alignment of research interest and supervisor

- AISG notifies the applicant and the university about the status of each application
- Application results will be updated on the AISG AI PhD Fellowship portal after the email